

### PRODUCT



### DESCRIPTION

- Opening angle: 105°
- Cabinet width up to 1800mm
- Cabinet height: 240-600mm
- Cabinet minimum depth: 125mm
- Door thickness: 16-26mm
- Handle-less, stays at any desired position
- Silent and smooth closing
- Side, height and depth adjustment
- Tool free assembly and removal

#### Power factor LF=

Cabinet height KH(mm) x door weight incl. double handle weight(kg)

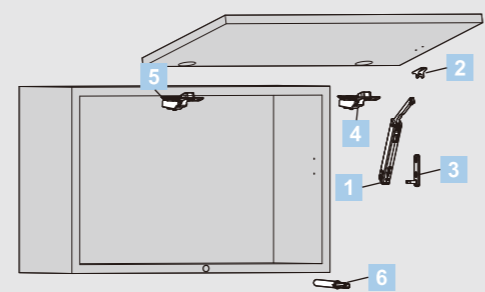
Note: A practical trial is suggested when the power factor of lift mechanism is close to the critical value.

### ORDER INFORMATION

<b>1</b>	Lift Mechanism set/ Industrial Package Nickel Plated(A01)			
	Power Factor LF	Dynamic	Item No.	Set/ctn
	200-1000	Light	SE2FAL	20
	500-1400	Medium	SE2FAM	20
	960-2050	Strong	SE2FAH	20
The power factor can be double when a second lift mechanism is used.				
<b>2</b>	Front Fixing-brackets/ Industrial Package for wooden door and wide Alu frame door Nickel Plated(A01)			
	Item No.	SE00YQ		
	Pcs/ctn	200		
<b>2</b>	Front Fixing-brackets/Industrial Package for wooden door, wide Alu frame door and narrow frame door Nickel Plated(A01)			
	Item No.	SE00CQ		
	Pcs/ctn	200		
<b>2</b>	Front Fixing-brackets set/Industrial Package for narrow alu frame door Nickel Plated(A01)			
	Item No.	SE00H		
	Set/ctn	200		
	4 pcs $\Phi$ 3.5X8.5mm countersunk screws included			
<b>3</b>	Mounting plate/Industrial Package Nickel Plated(A01)			
	Item No.	SE00TQ		
	Pcs/ctn	200		
	Caps/Industrial Package White(H29) ! Grey(H30) ! Nickel Plated(A01)			
		Item No.	Set/ctn	
	Left	SEJS02L	200	
	Right	SEJS02R	200	

<b>4</b>	Unsprung hinge for wooden door and wide Alu frame door/ Industrial Package Nickel Plated(A01)		
	Item No.	A80A675	
	Pcs/ctn	200	
	3 hinges are required when the cabinet width is over 900mm or the power factor is over 1800 4 hinges are required when the cabinet width is over 1200mm or the power factor is over 2700		
Door thickness:16-26mm.			
<b>4</b>	Unsprung hinge for narrow Alu frame door / Industrial Package Nickel Plated(A01)		
	Item No.	A80A678	
	Pcs/ctn	200	
	3 hinges are required when the cabinet width is over 900mm or the power factor is over 1800 4 hinges are required when the cabinet width is over 1200mm or the power factor is over 2700 Range of width of aluminium frame(V):19-22mm.		
<b>5</b>	Mounting plate/Industrial Package Nickel Plated(A01)		
	Item No.	89H00AQ	
	Pcs/ctn	200	
<b>6</b>	Insert-type Magnetic Push Latch/Industrial Package		
	Item No.	MS-A011A	
	Pcs/ctn	200	

Alternative:Push Latch see page 200



### ORDER INFORMATION

#### T1 Recommended Kit Package

Including:

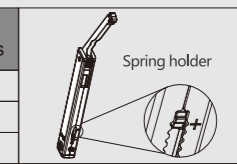
1 X Lift Mechanism	1 X Front Fixing-bracket	1 X Mounting plate	5 X wooden screws $\Phi$ 4X16mm	1 X Drilling Magnetic Push Latch

Please select the corresponding kit package item No. according to power factor and cabinet height

Power Factor(LF)	Cabinet Height	Kit package item No.
200-1000	240-600mm	SE2FAL01
500-1400		SE2FAM01
960-2050		SE2FAH01

Spring holder colours represent different powers

Light grey
Dark grey
White



#### T2 Recommended Kit Package

Including:

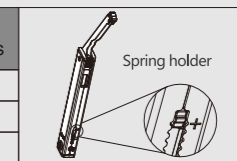
1 X Lift Mechanism	1 X Front Fixing-bracket	1 X Mounting plate	13 X wooden screws $\Phi$ 4X16mm	1 X Drilling Magnetic Push Latch	2 X Hinge	2 X Mounting plate

Please select the corresponding kit package item No. according to power factor and cabinet height

Power Factor(LF)	Cabinet Height	Kit package item No.
200-1000	240-600mm	SE2FAL01A
500-1400		SE2FAM01A
960-2050		SE2FAH01A

Spring holder colours represent different powers

Light grey
Dark grey
White

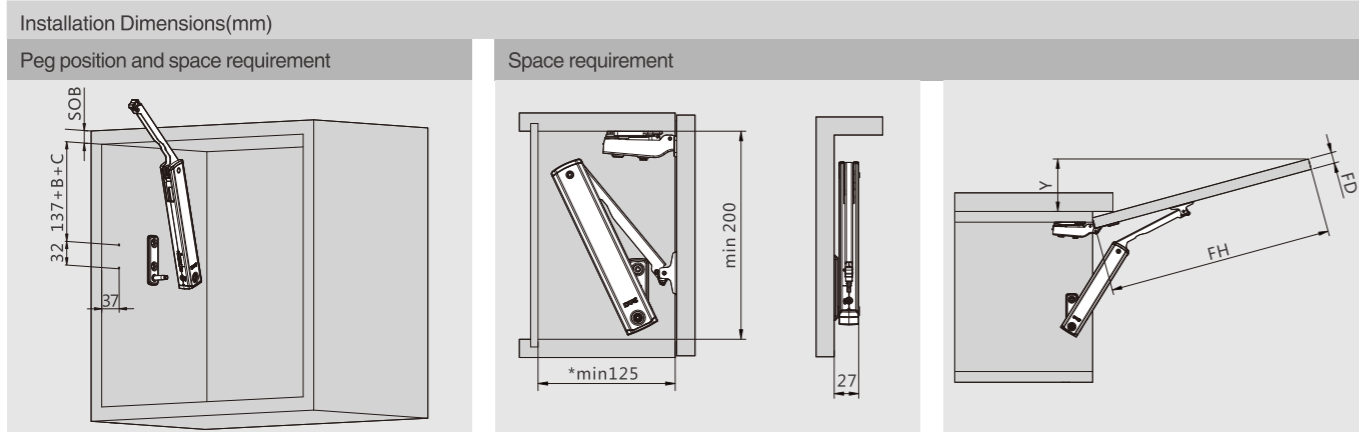


! Front fixing bracket SE00H should be ordered when the front is narrow Alu frame door.

# TOP-STAYS

## SE Series Push-open Lifting System

### PLANNING

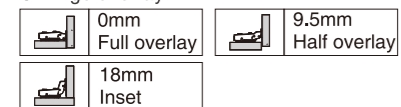


SOB Top panel thickness

B Hinge mounting plate height

B	0mm	2mm	4mm	9mm	18mm
Mounting plate	H=0	H=2	H=4	H=9	H=18

C Hinge overlay



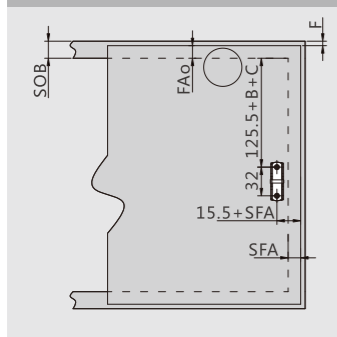
\* Minimum 200mm for suspension bracket application

$$Y = (FH - a) \times 0.3$$

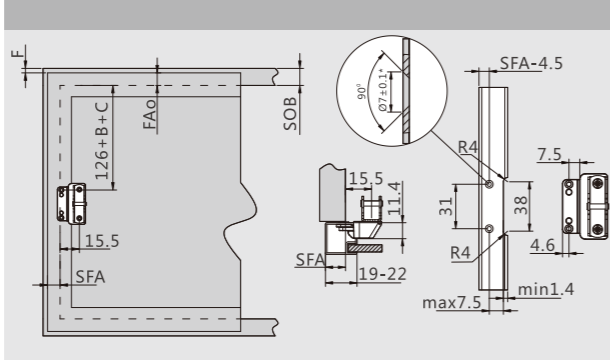
FH=Front height

FD (mm)	16	19	22	24
a (mm)	45	34	23	15

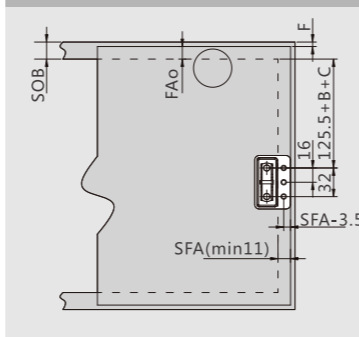
Door Assembly - wooden doors and wide alu frames



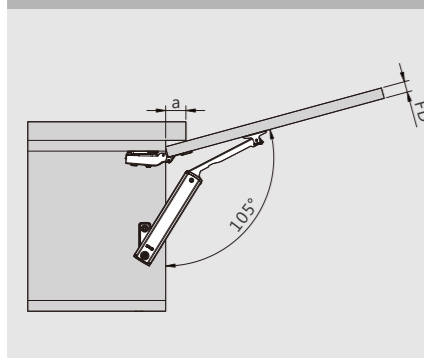
Door Assembly - narrow alu frames



Door Assembly - wooden doors/ wide alu frames/ narrow alu frames



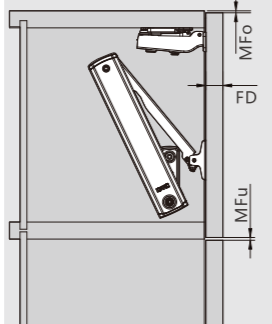
Cornice/crown moulding clearance



FD (mm)	16	19	22	24
a (mm)	45	34	23	15

Minimum gap

MFu=1.5mm



D(mm)	K(mm)				Mounting plate
	3	4	5	6	
15	16	17	18	H=0	
13	14	15	16	H=2	
11	12	13	14	H=4	
6	7	8	9	H=9	

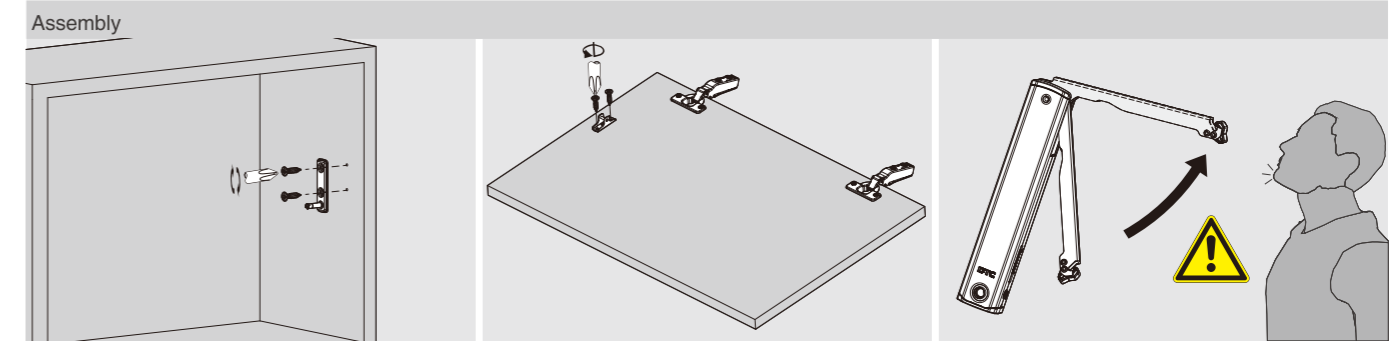
K=Drilling distance D=Required door overlay

FD=	16	17	18	19	20	21	22	23	24	25	26
K=3 MFo=	0.7	0.9	1.2	1.5	1.8	2.2	2.6	3.2	3.8	4.5	5.3
K=4 MFo=	0.7	0.9	1.1	1.4	1.8	2.1	2.5	3.0	3.5	4.4	4.9
K=5 MFo=	0.6	0.9	1.1	1.4	1.7	2.0	2.4	2.9	3.4	3.9	4.6
K=6 MFo=	0.6	0.8	1.1	1.3	1.6	2.0	2.4	2.8	3.2	3.8	4.4

F: Gap    FAo: Top panel overlay    SFA: Side panel overlay= side thickness – gap  
 MFu: Bottom Min. gap    FD: Door thickness  
 MFo: Top Min. gap

# TOP-STAYS

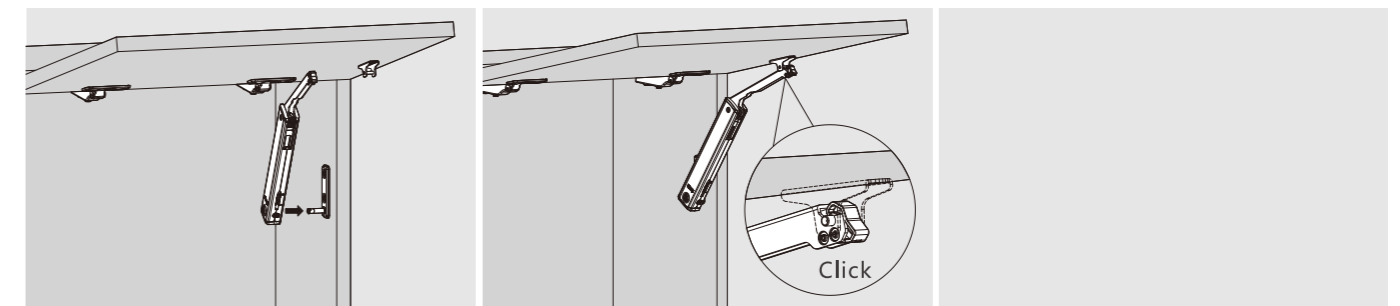
## Assembly , Removal and Adjustment(for SE Series Lifting System)



Assembly

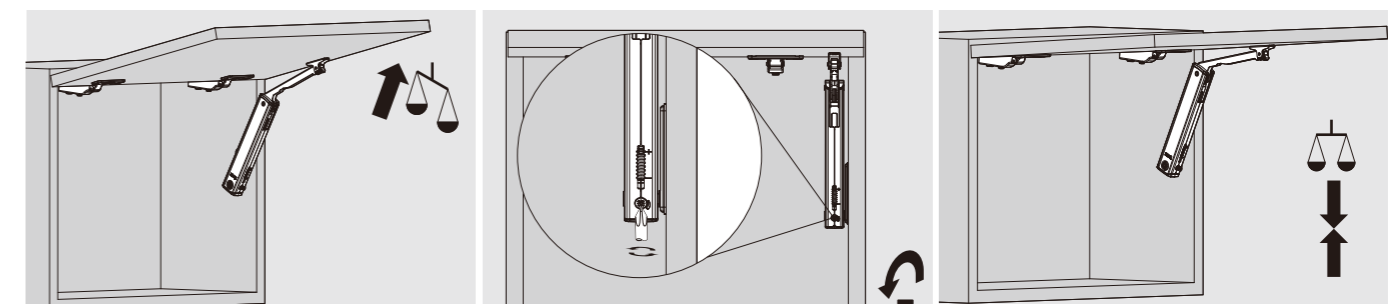
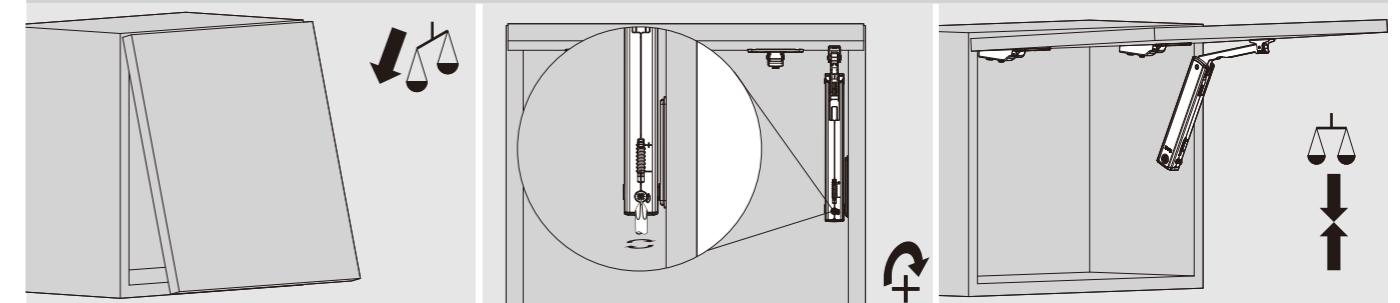
Door Assembly

The arm of this device could spring up and cause injury. Do not push the arm down without door attached.



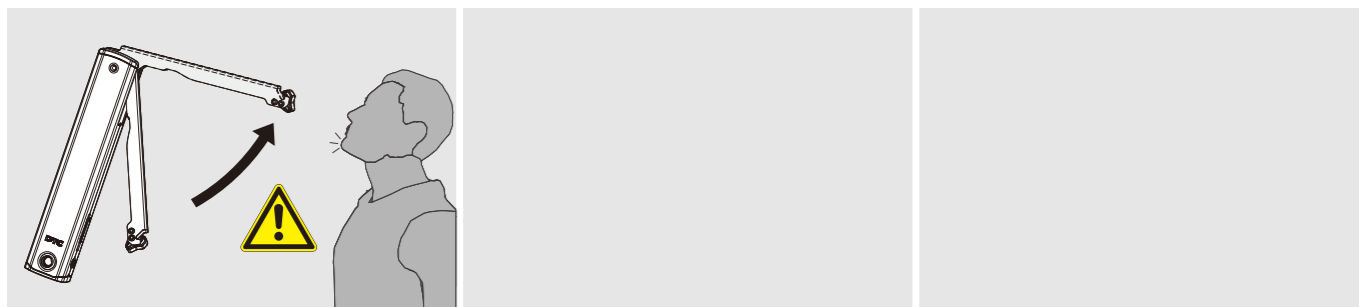
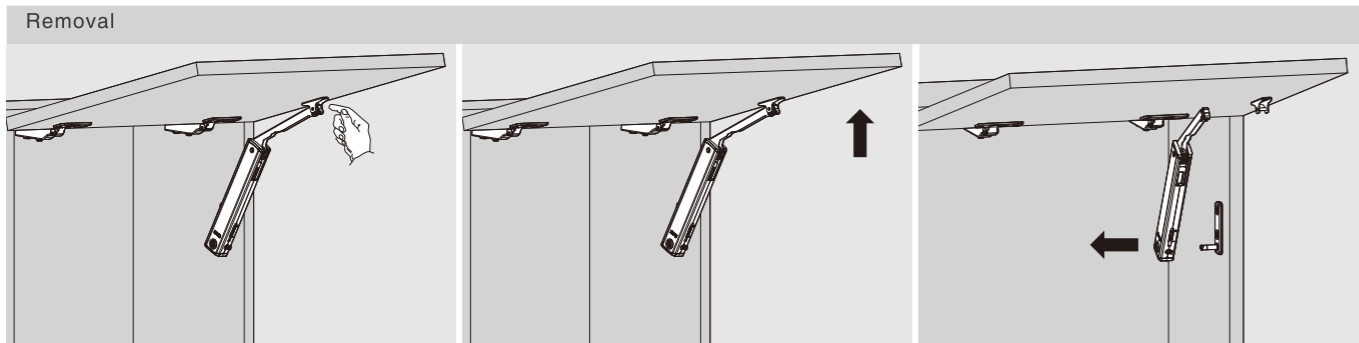
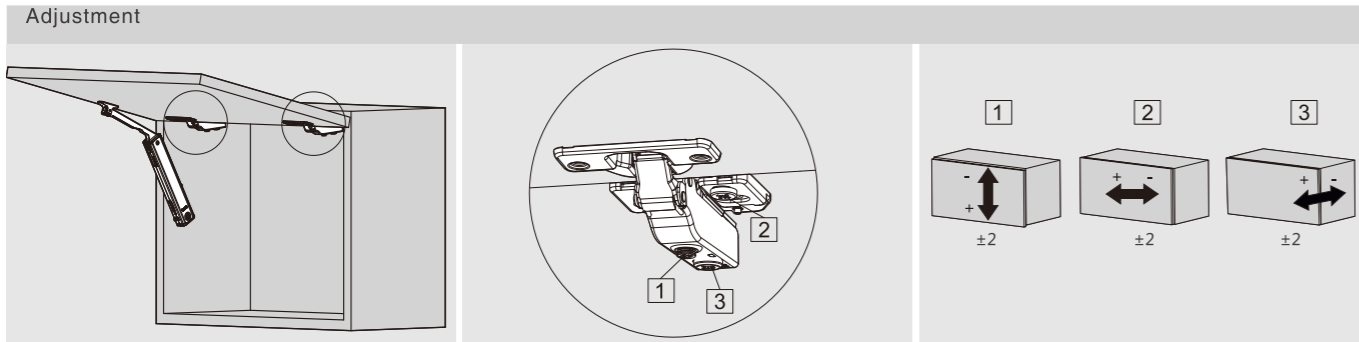
Door Assembly

Hovering Adjustment



# TOP-STAYS

Assembly , Removal and Adjustment (for SE Series Lifting System)



The arm of this device could spring up and cause injury!

# TOP-STAYS

Assembly (for SE Series Push-open Lifting System)

## PLANNING

