

# D-MOTION

## DS80 Series Full Extension Undermount Slides with Locking Device



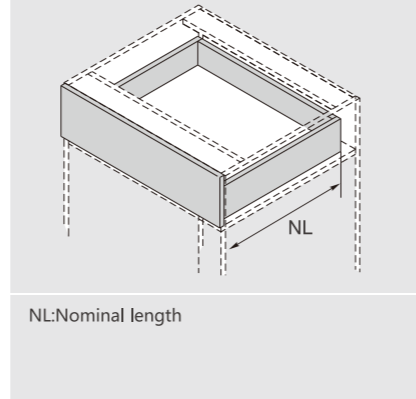
### PRODUCT



### DESCRIPTION

- Load capacity: 35kg
- Finish: zink plated
- Length: 250-600mm, full extension
- Silent system guarantees smooth run without noise
- 2D adjustment, up&down: 0-3mm, side: ± 1.5mm
- 3D adjustment, up&down: 0-3mm, side: ± 1.5mm, depth: 0-3mm
- Maximum drawer side thickness: 19mm

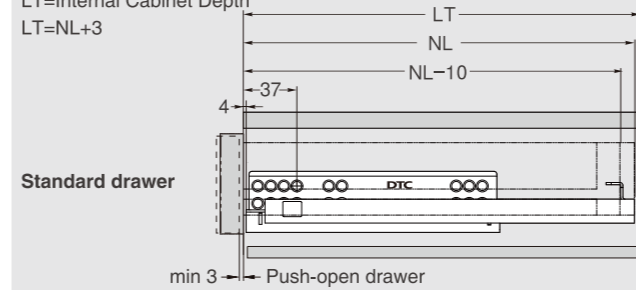
### SPACE REQUIREMENT



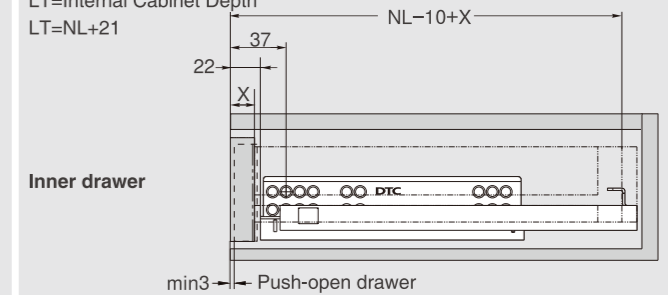
### PLANNING

#### Installation Dimensions(mm)

NL=Nominal Slide Length  
LT=Internal Cabinet Depth  
LT=NL+3



NL=Nominal Slide Length  
LT=Internal Cabinet Depth  
LT=NL+21



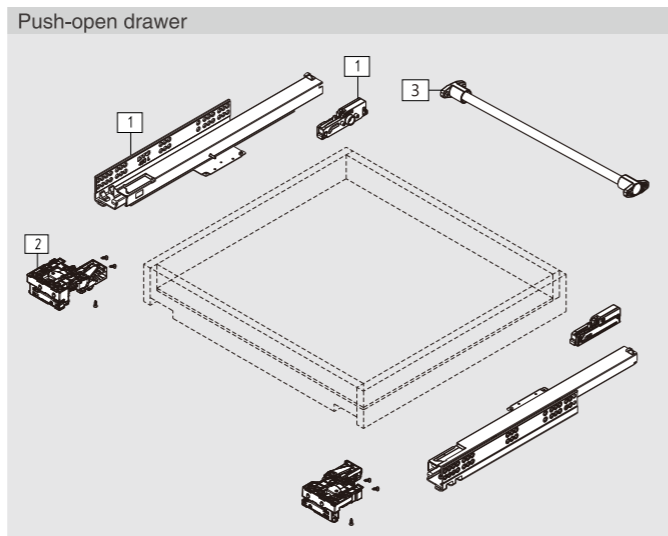
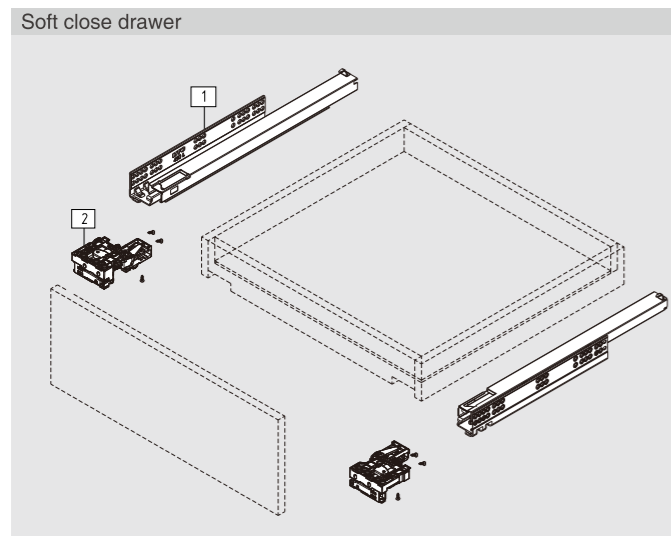
### SOFT CLOSE DRAWER/PUSH-OPEN DRAWER

1 Slides (left/right)					
Pre-zinc Steel (F02)					
NL	Soft close item No.	Set/ctn	Push-open item No.	Set/ctn	
250mm	DS80250H	DF80250H		10	
270mm	DS80270H	DF80270H		10	
300mm	DS80300H	DF80300H		10	
350mm	DS80350H	DF80350H		10	
400mm	DS80400H	DF80400H		10	
450mm	DS80450H	DF80450H		10	
500mm	DS80500H	DF80500H		10	
550mm	DS80550H	DF80550H		10	
600mm	DS80600H	DF80600H		10	

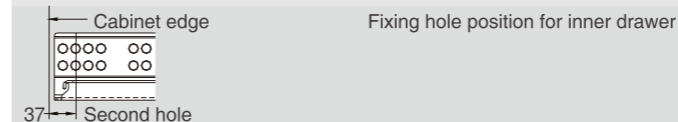
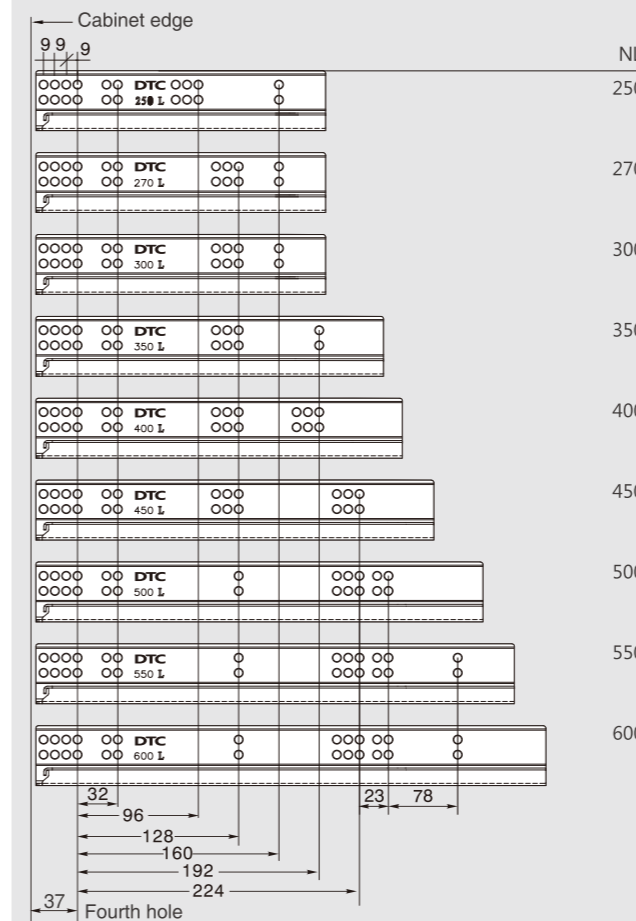
2D Locking Device (Left/Right)	
Grey(H11)	
Item No.	0DSD03-A

3D Locking Device (Left/Right)	
Grey(H11)	
Item No.	0DSD04-A

3 Rod for Push-open Synchronization (For cutting to size, 1100mm. Cutting: Internal cabinet width LW-180)	
Item No.	HT0FH02

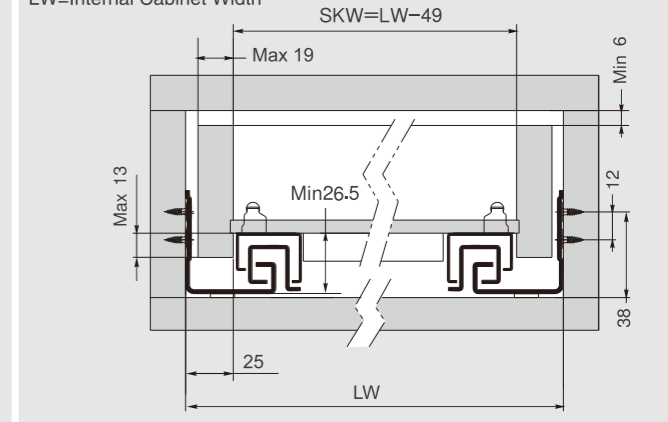


#### Screw Positions of the Slides(mm)

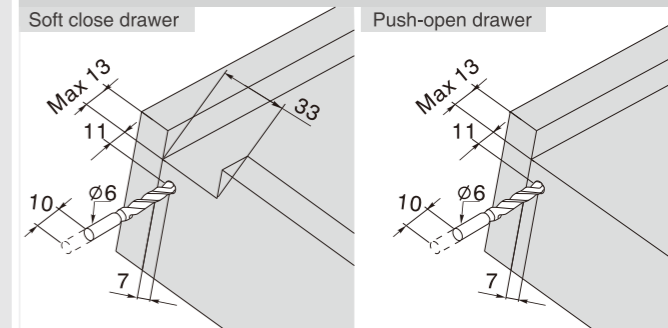


#### Installation Dimensions(mm)

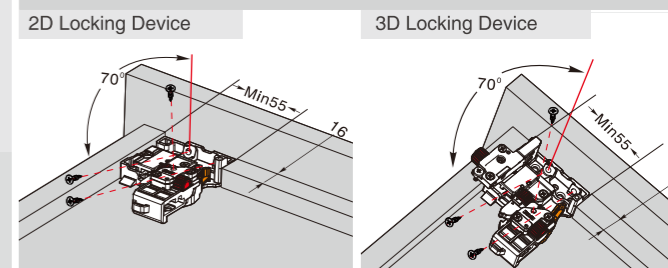
SKW=Internal Drawer Width  
LW=Internal Cabinet Width



#### Drawer Back Preparation(mm)

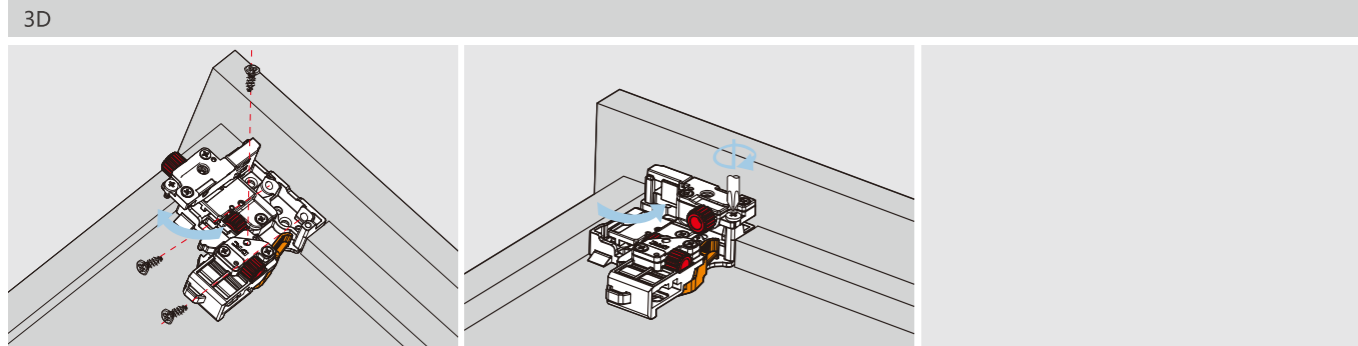


#### Locking Device Installation(mm)



# ASSEMBLY AND ADJUSTMENT

Assembly and Adjustment (for DS series)

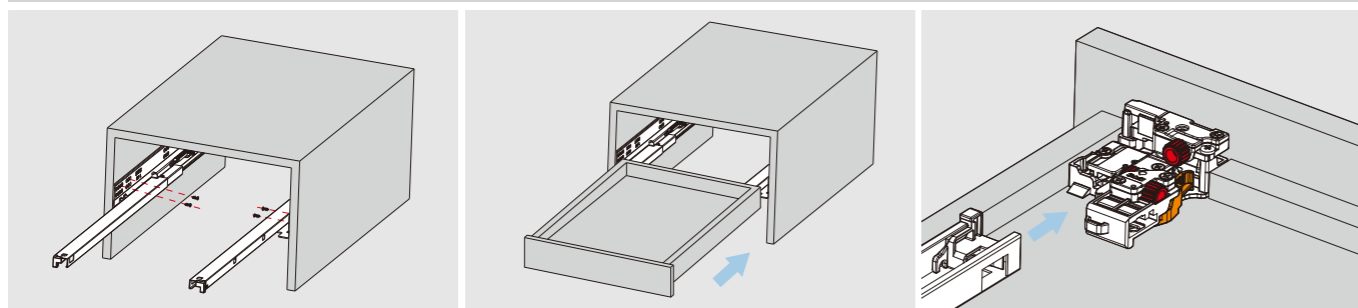


Move out the adjusting part and fix the locking device onto the drawer bottom.  
Put the adjusting part back and tighten the screws.



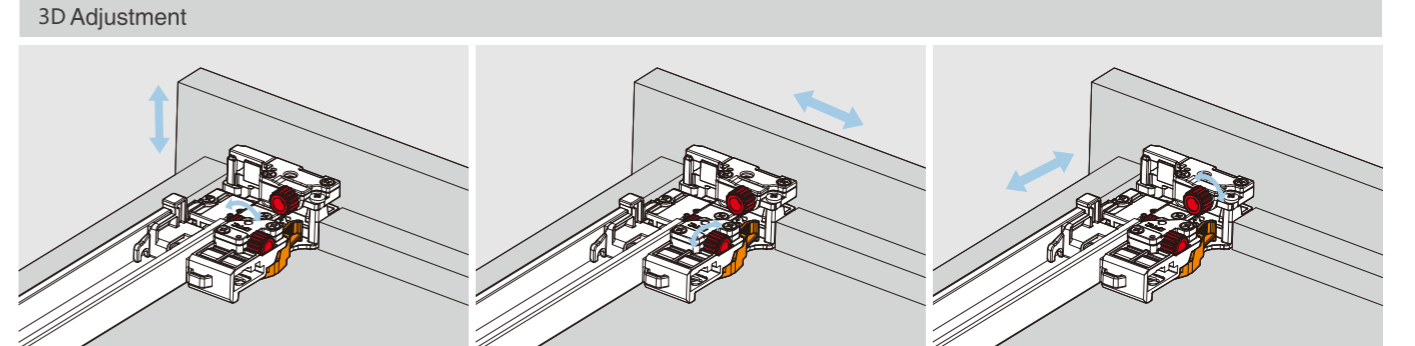
Fix the locking device onto the drawer bottom.

## Drawer Assembly with 3D Adjustment Locking Device



Fix the slide onto the cabinet.

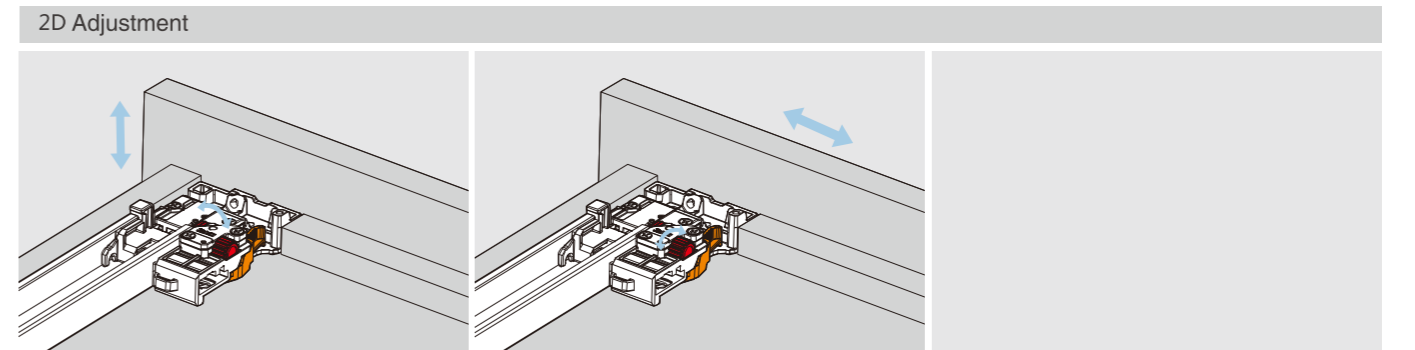
Lay the drawer bottom onto the slide then push the drawer into the cabinet.



Up&down adjustment

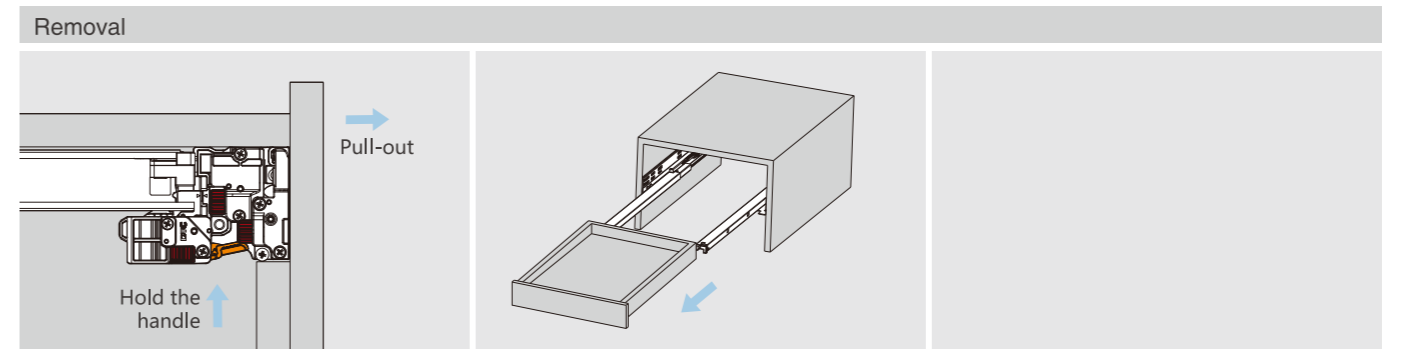
Side adjustment

Depth adjustment



Up&down adjustment

Side adjustment



For removal, hold the handle and pull out the drawer.