

LIFTING
SYSTEM

SQ Series

TOP-STAYS



TOP-STAYS

The new experience of the lift-up door

Agile and Unconstrained, Innovation and Ingenuity



- A rigorous mechanical design, adjustable opening and hovering forces and closing speed
- A superb manufacturing process, gentle and quiet closing
- Stylish design with single and dual-colour cover caps



Quietness



Intelligence



Durability



Eco-Friendliness

TOP-STAYS

SQ Series Lifting System

Smooth and unconstrained, comfortable and elegant
— An entirely new experience of lift-up



The SQ lift-up support lifts the single door upwards making it suitable for wall cabinets as well as high cabinets.
Places of application: Kitchen, living room, office and bathroom

- Opening angle 107°, making it possible to easily take without any constraint the articles inside the cabinet
- Silent and smooth closing
- Easy to open and stays at any desired position
- Adjustable soft-closing speed
- Adjustable opening and hovering forces
- Snap-fit mechanism makes installation and dismantling very easy
- Stylish design with single and dual-colour cover caps
- Suitable for wall cabinets with cornice
- High stability, even with wide doors

Opening and closing – Gentle and unconstrained



Easy to open

Opening angle 107°

Soft-closing and stays at any desired angle

Seamless closing

The outstanding points



The unique adjustable closing speed

Adjustable opening and hovering forces

Door position: 3D adjustable

Personal decorative cover

Customized cover caps

Single caps series



white

grey

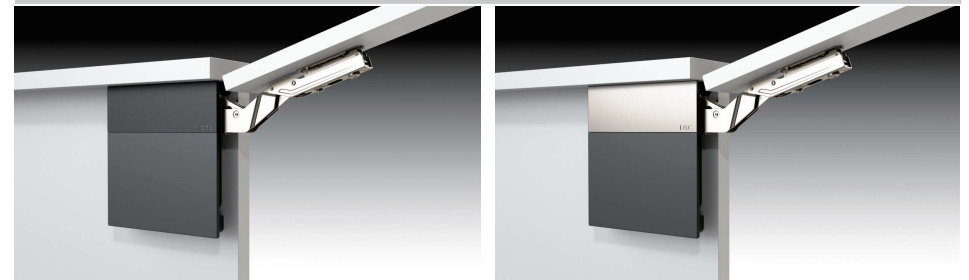
Dual-colour caps series



white+ light grey

white+ nickel plated

Dual-colour caps series



grey+ dark grey

grey+ nickel plated

PRODUCT



DESCRIPTION

- Opening angle:107°
- Cabinet width up to 1200mm
- Cabinet height:250~600mm
- Door thickness:16~28mm
- 3D door adjustments:
Height adjustment: +/-2mm,
Depth adjustment: +/-2mm,
Side adjustment: +/-2mm,
- Easy to open, and stays at any desired position
- Adjustable hovering forces
- Tool free assembly and removal
- Single and dual-colour caps at your disposal

Power factor LF=

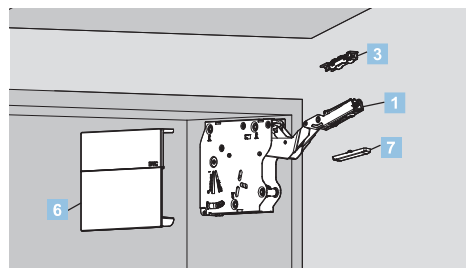
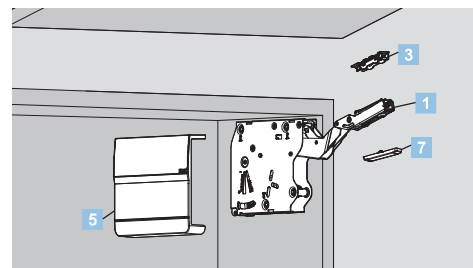
Cabinet height KH(mm) x door weight incl. double handle weight(kg)

Note: The power factor LF and the door weight can be increased by 50% when a third lift mechanism is used.

ORDER INFORMATION

1	Lift Mechanism set/ Industrial Package Opening angle:107°			
	Power Factor LF	Dynamic	Item No.	Set/ctn
	480-1250	Light	SQ02BL	10
	960-2350	Medium	SQ02BM	10
3	Front Fixing-brackets set/Industrial Package For Wooden Door and Wide Alu Frames			
	Nickel Plated(A01)			
5	Single Caps(left/right) / Industrial Package Plastic			
	Colour	Item No.	Set/ctn	
	White	SQJS03A	20	
	Grey	SQJS03B	20	
7	Decoration cover for hinge arm /Industrial Package Nickel Plated(A01)			
	Item No.	Set/ctn		
	S15H	4000		

2	Opening angle restriction clip / Industrial Package Plastic			
	100°	Dark grey (H11)		
4	Narrow Alu Frame fixing-brackets set Industrial Package For Narrow Alu Frames			
	Nickel Plated(A01)			
6	Dual-colour Caps(left/right) / Industrial Package Plastic			
	Colour	Item No.	Set/ctn	
	White+ light grey	SQJS04A	20	
4	Opening angle			
	Item No.	Pcs/ctn		
	100°	SQW100	1000	
	75°	SQW75	1000	
4	Item No.			
	SQ00H			
	Set/ctn	100		
				10 pcs Φ3.5X8.5mm countersunk screws included



ORDER INFORMATION

T1 Single Caps-Recommended Kit Package

Including:

1x lift mechanism set	1x single caps set	1x front fixing-brackets set	2 X Decoration cover for hinge arm	6x wooden screw Ø4X38mm	4x wooden screw Ø4X16mm

Please select the corresponding kit package item No. according to power factor and cabinet height

Power Factor(LF)	Cabinet Height	Kit package item No.(white single caps)	Kit package item No.(grey single caps)
480-1250	250-400mm	SQ02BL03A	SQ02BL03B
960-2350	250-500mm	SQ02BM03A	SQ02BM03B
1600-3600	250-500mm	SQ02BH03A	SQ02BH03B
2500-4500	350-600mm	SQ02BC03A	SQ02BC03B

T2 Dual-colour Caps-Recommended Kit Package

Including:

1x lift mechanism set	1x dual-colour caps set	1x front fixing-brackets set	2 X Decoration cover for hinge arm	6x wooden screw Ø4X38mm	4x wooden screw Ø4X16mm

Please select the corresponding kit package item No. according to power factor and cabinet height

Power Factor(LF)	Cabinet Height	Kit package item No.(White+ light grey caps)	Kit package item No.(Grey+ dark grey caps)
480-1250	250-400mm	SQ02BL04A	SQ02BL04B
960-2350	250-500mm	SQ02BM04A	SQ02BM04B
1600-3600	250-500mm	SQ02BH04A	SQ02BH04B
2500-4500	350-600mm	SQ02BC04A	SQ02BC04B

Please select the corresponding kit package item No. according to power factor and cabinet height

Power Factor(LF)	Cabinet Height	Kit package item No.(White+ nickel plated caps)	Kit package item No.(Grey+ nickel plated caps)
480-1250	250-400mm	SQ02BL04C	SQ02BL04D
960-2350	250-500mm	SQ02BM04C	SQ02BM04D
1600-3600	250-500mm	SQ02BH04C	SQ02BH04D
2500-4500	350-600mm	SQ02BC04C	SQ02BC04D

In the case of narrow alu frame application,order fixing-brackets SQ00H separately.

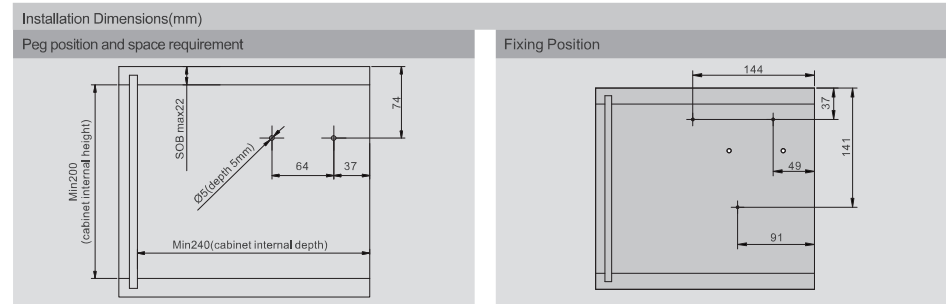
TOP-STAYS

SQ Series Lifting System

TOP-STAYS

Assembly, Removal and Adjustment (for SQ series Lifting System)

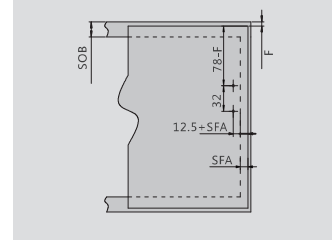
PLANNING



SOB: top panel thickness

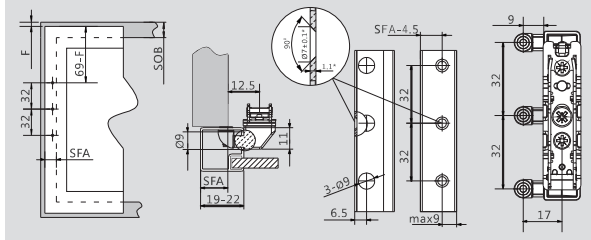
4x wooden screws Ø4X38mm

Door planning and assembly- wooden doors and wide alu frames



4 wooden screws for wooden doors (Ø4X16mm)
SFA: door overlay of the side panel
F: gap

Door planning and assembly- narrow alu frames

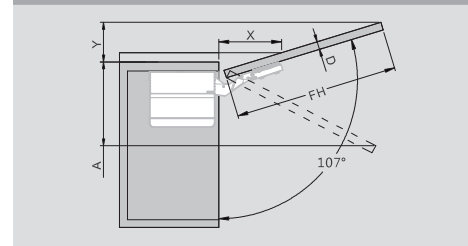


Frame width (mm)	19	20	21	22
SFA (mm)	15~19	16~20	17~21	18~22

10 countersunk screws for narrow alu frames (Φ3.5X8.5mm)

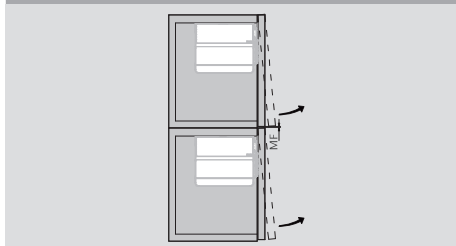
*When changing material thickness, adjust the assembly dimensions accordingly

Cornice/crown moulding clearance



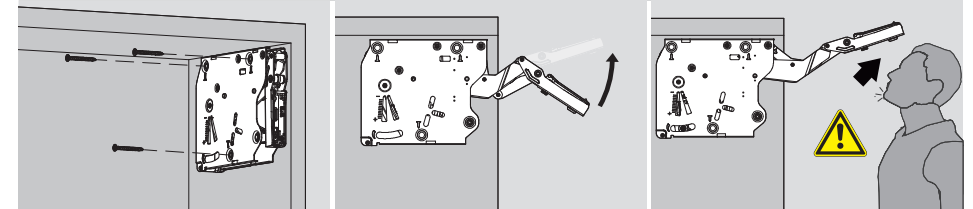
D (mm)	16	19	22	26	28
X (mm)	70	58	49	35	26
Opening angle restriction	Space requirement (mm)				
without	$Y = FH \times 0.29 - 15 + D$				
100°	$Y = FH \times 0.17 - 15 + D$				
75°	$A = FH \times 0.26 + 15 - D$				

Minimum gap



MF: Minimum gap 2mm

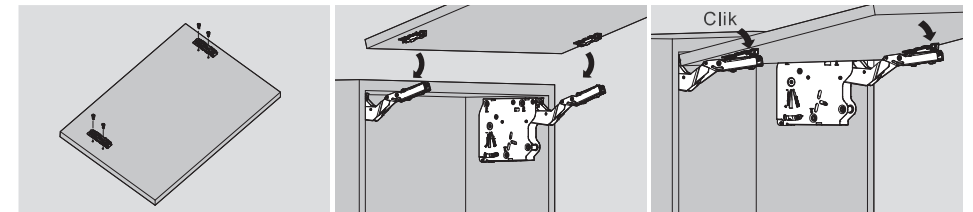
Assembly



Assembly

Caution when opening arm

The arm of this device could spring up and cause injury. Do not push the arm down without door attached.

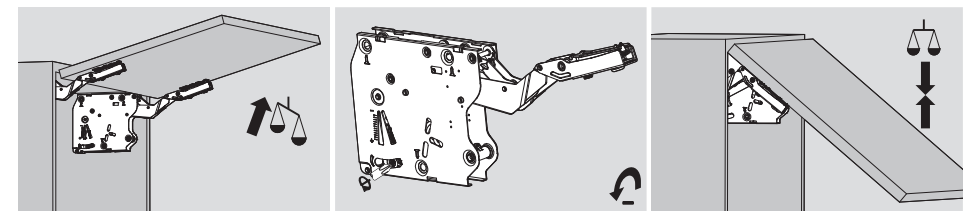
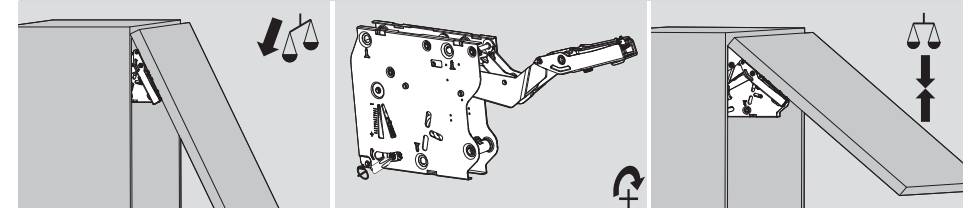


Panel Fastener Installation

Door Assembly

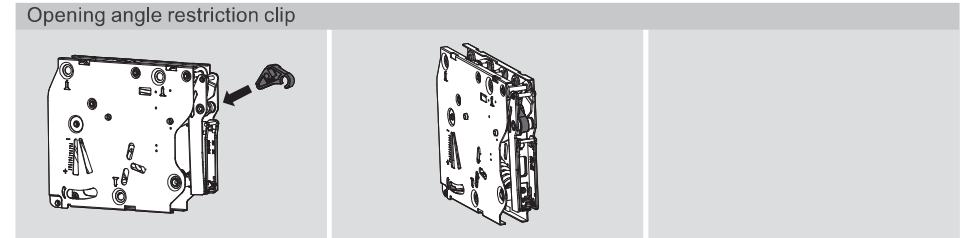
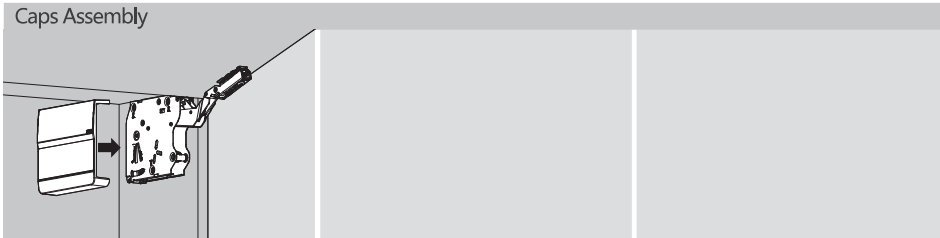
Click

Hovering Adjustment

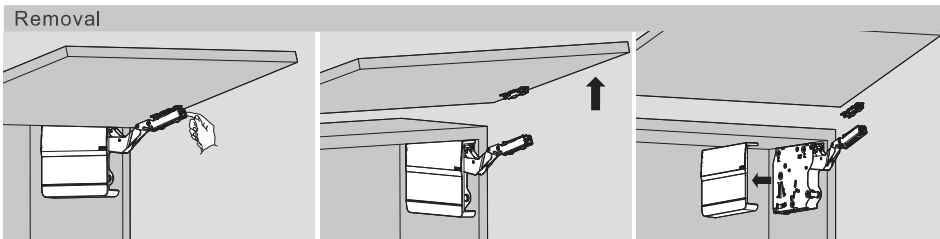
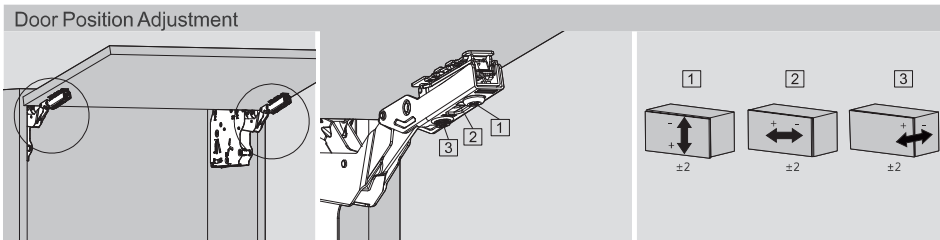


TOP-STAYS

Assembly , Removal and Adjustment(for SQ series Lifting System)



Assembly



The arm of this device could spring up and cause injury!

Do not push the arm down without door attached

