

LIFTING
SYSTEM

SE Series
TOP-STAYS



TOP-STAYS

The new experience of the lift-up door

Agile and Unconstrained, Easy and Convenient



- Easy to open and stays at any desired position, silent and smooth closing
- Easy installation, simple, effective and precise adjustment



Quietness



Intelligence



Durability



Eco-Friendliness

PRODUCT



DESCRIPTION

- Opening angle: 105°
- Cabinet width up to 1800mm
- Cabinet height: 240-600mm
- Cabinet minimum depth: 125mm
- Easy to open and stays at any desired position
- Silent and smooth closing
- Side, height and depth adjustment
- Tool free assembly and removal

Power factor LF=

Cabinet height KH(mm) x door weight incl. double handle weight(kg)

Note: A practical trial is suggested when the power factor of lift mechanism is close to the critical value.

ORDER INFORMATION

1		Lift Mechanism set/ Industrial Package Nickel Plated(A01)			
		Power Factor LF	Dynamic	Item No.	Set/ctn
		200-1000	Light	SE00AL	20
		500-1500	Medium	SE00AM	20
		960-2350	Strong	SE00AH	20

The power factor can be double when a second lift mechanism is used.

2		Front Fixing-brackets/ Industrial Package for wooden door and wide Alu frame door Nickel Plated(A01)	
		Item No.	SE00YQ
		Pcs/ctn	200

2		Front Fixing-brackets/Industrial Package for wooden door, wide Alu frame door and narrow frame door Nickel Plated(A01)	
		Item No.	SE00CQ
		Pcs/ctn	200

2		Front Fixing-brackets set/Industrial Package for narrow alu frame door Nickel Plated(A01)	
		Item No.	SE00H
		Set/ctn	200
		4 pcs Φ3.5X8.5mm countersunk screws included	

3		Mounting plate/Industrial Package Nickel Plated(A01)	
		Item No.	SE00TQ
		Pcs/ctn	200

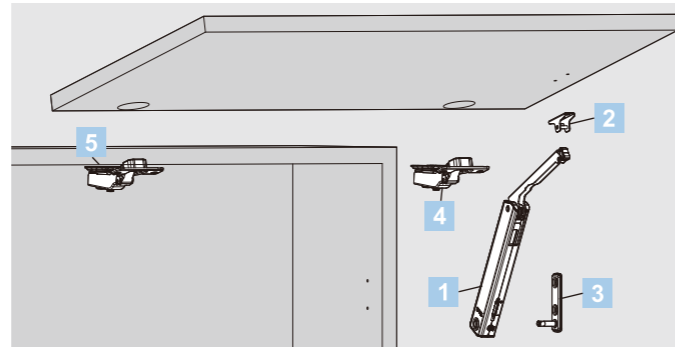
4		Soft-close hinge for wooden door and wide Alu frame door/ Industrial Package Nickel Plated(A01)	
		Item No.	C80A676F
		Pcs/ctn	200
		3 hinges are required when the cabinet width is over 900mm or the power factor is over 1800 4 hinges are required when the cabinet width is over 1200mm or the power factor is over 2700	

Alternative PIVOT-STAR speed-adjustable hinge C81A676F.

4		Soft-close hinge for narrow Alu frame door / Industrial Package Nickel Plated(A01)	
		Item No.	C80A678F
		Pcs/ctn	200
		3 hinges are required when the cabinet width is over 900mm or the power factor is over 1800 4 hinges are required when the cabinet width is over 1200mm or the power factor is over 2700	

5		Adjustable mounting plate/Industrial Package Nickel Plated(A01)	
		Item No.	89T00TQ
		Pcs/ctn	200

Use mounting plate 81T00TQ for PIVOT-STAR speed adjustable hinge C81A676F



T1 Recommended Kit Package

Including:

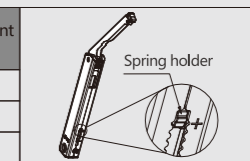
1 X Lift Mechanism	1 X Front Fixing-bracket	1 X Mounting plate	4 X wooden screws Ø4X16mm

Please select the corresponding kit package item No. according to power factor and cabinet height

Power Factor(LF)	Cabinet Height	Kit package item No.
200-1000	240-600mm	SE00AL01
500-1500		SE00AM01
960-2350		SE00AH01

Spring holder colours represent different powers

Light grey
Dark grey
White



! Front fixing bracket SE00H should be ordered when the front is narrow Alu frame door.

PLANNING

Installation Dimensions (mm)

Peg position and space requirement

Space requirement

SOB Top panel thickness

B Hinge mounting plate height

B	0mm	2mm	4mm	9mm	18mm
Mounting plate	H=0	H=2	H=4	H=9	H=18

C Hinge overlay

0mm Full overlay
 9.5mm Half overlay
 18mm Inset

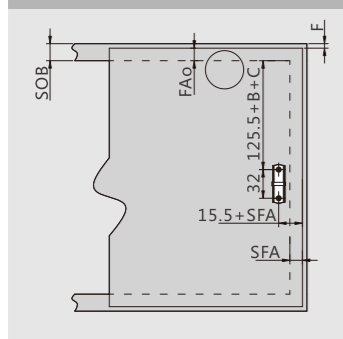
* Minimum 200mm for suspension bracket application

$$Y = (FH - a) \times 0.3$$

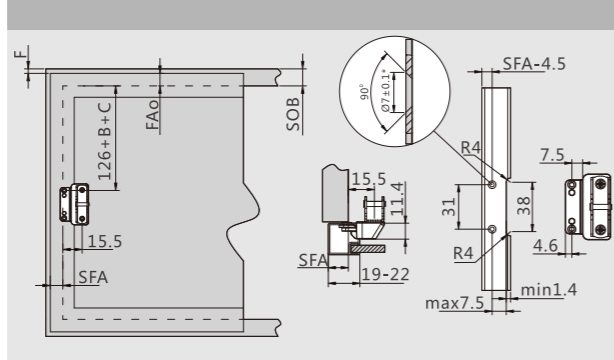
FH=Front height

FD (mm)	16	19	22	24
a (mm)	45	34	23	15

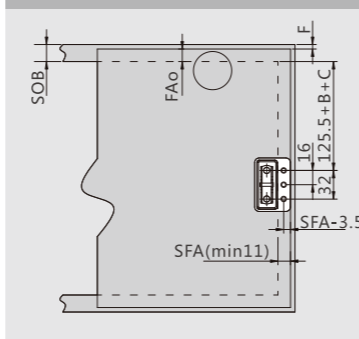
Door Assembly - wooden doors and wide alu frames



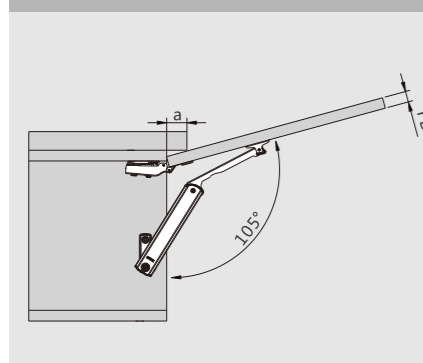
Door Assembly - narrow alu frames



Door Assembly - wooden doors/ wide alu frames/ narrow alu frames

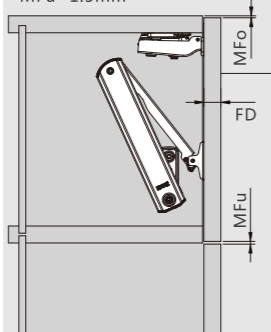


Cornice/crown moulding clearance



Minimum gap

MFu=1.5mm



K(mm)	3	4	5	6	Mounting plate
	15	16	17	18	
D(mm)	13	14	15	16	H=2
	11	12	13	14	H=4
	6	7	8	9	H=9

K=Drilling distance D=Required door overlay

FD=	16	17	18	19	20	21	22	23	24	25	26
K=3 MFo=	0.7	0.9	1.2	1.5	1.8	2.2	2.6	3.2	3.8	4.5	5.3
K=4 MFo=	0.7	0.9	1.1	1.4	1.8	2.1	2.5	3.0	3.5	4.4	4.9
K=5 MFo=	0.6	0.9	1.1	1.4	1.7	2.0	2.4	2.9	3.4	3.9	4.6
K=6 MFo=	0.6	0.8	1.1	1.3	1.6	2.0	2.4	2.8	3.2	3.8	4.4

F: Gap

FAo: Top panel overlay

MFu: Bottom Min. gap

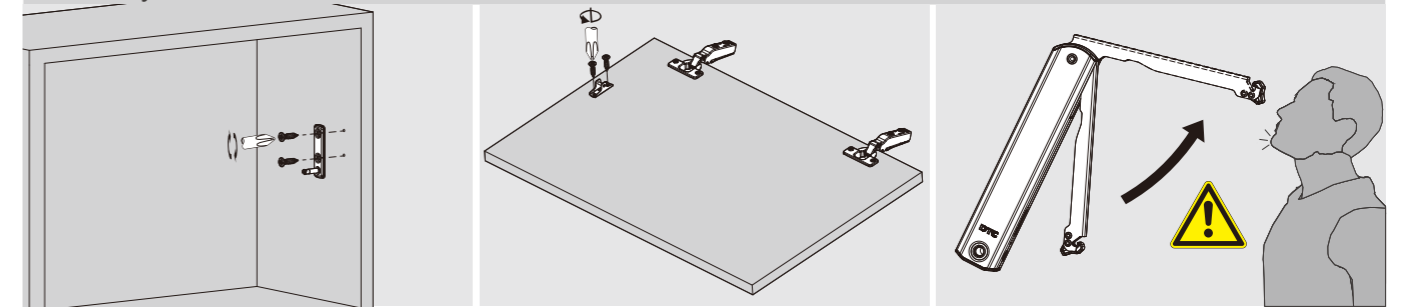
MFo: Top Min. gap

SFA: Side panel overlay = side thickness - gap

FD: Door thickness

FD (mm)	16	19	22	24
a (mm)	45	34	23	15

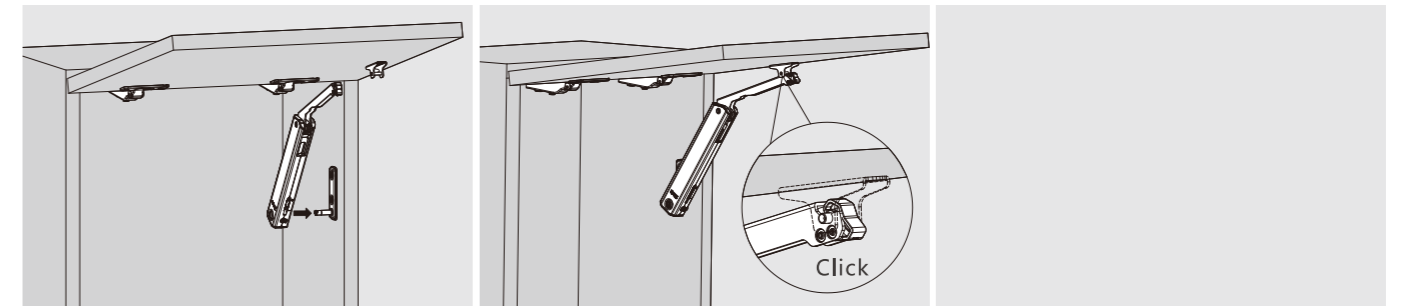
Assembly



Assembly

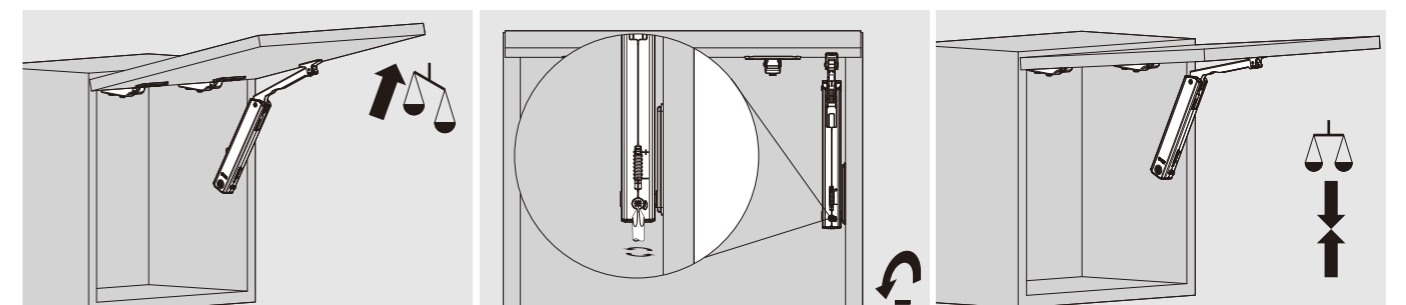
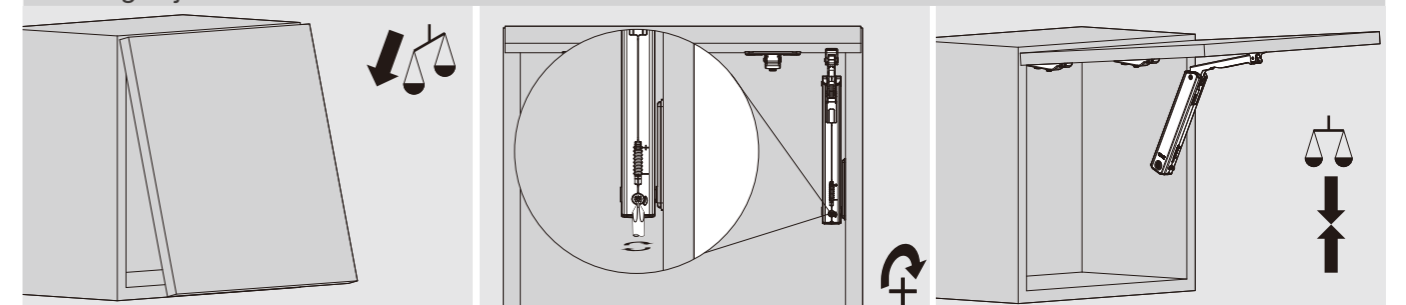
Door Assembly

The arm of this device could spring up and cause injury. Do not push the arm down without door attached.



Door Assembly

Hovering Adjustment

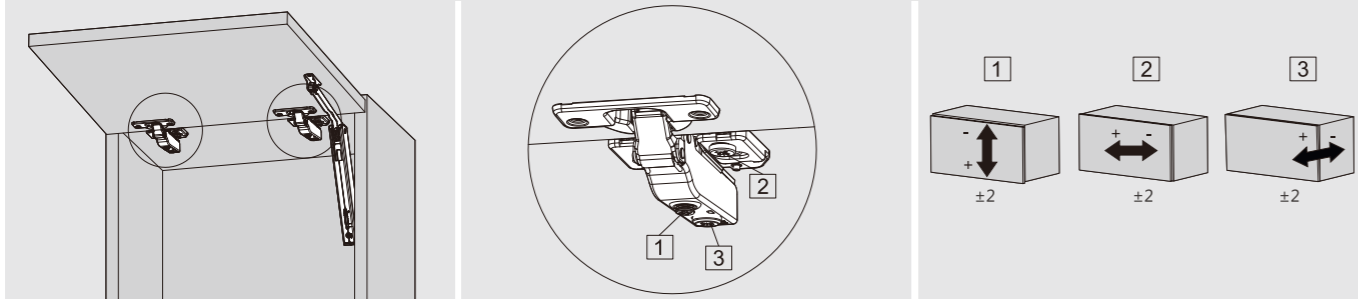


TOP-STAYS

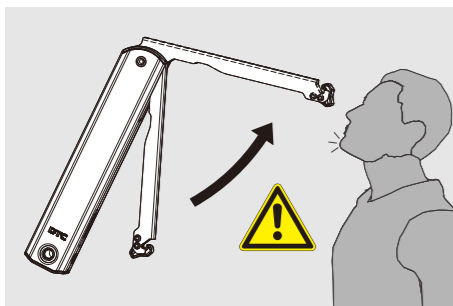
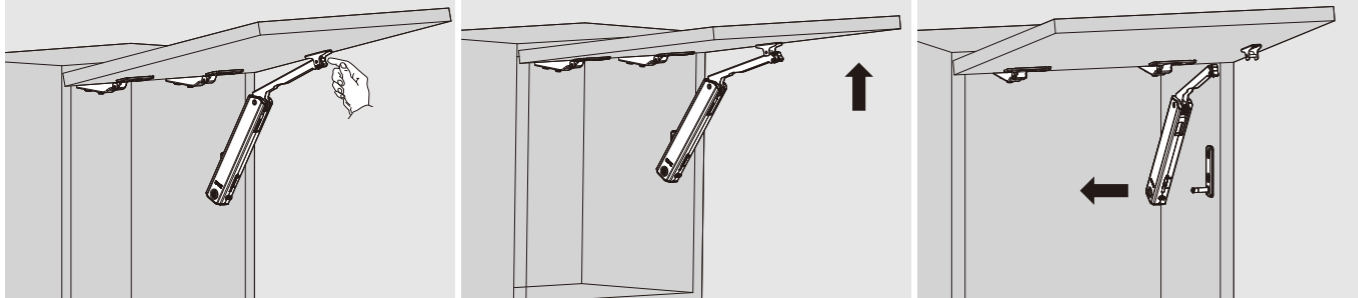
Assembly , Removal and Adjustment(for SE series Lifting System)



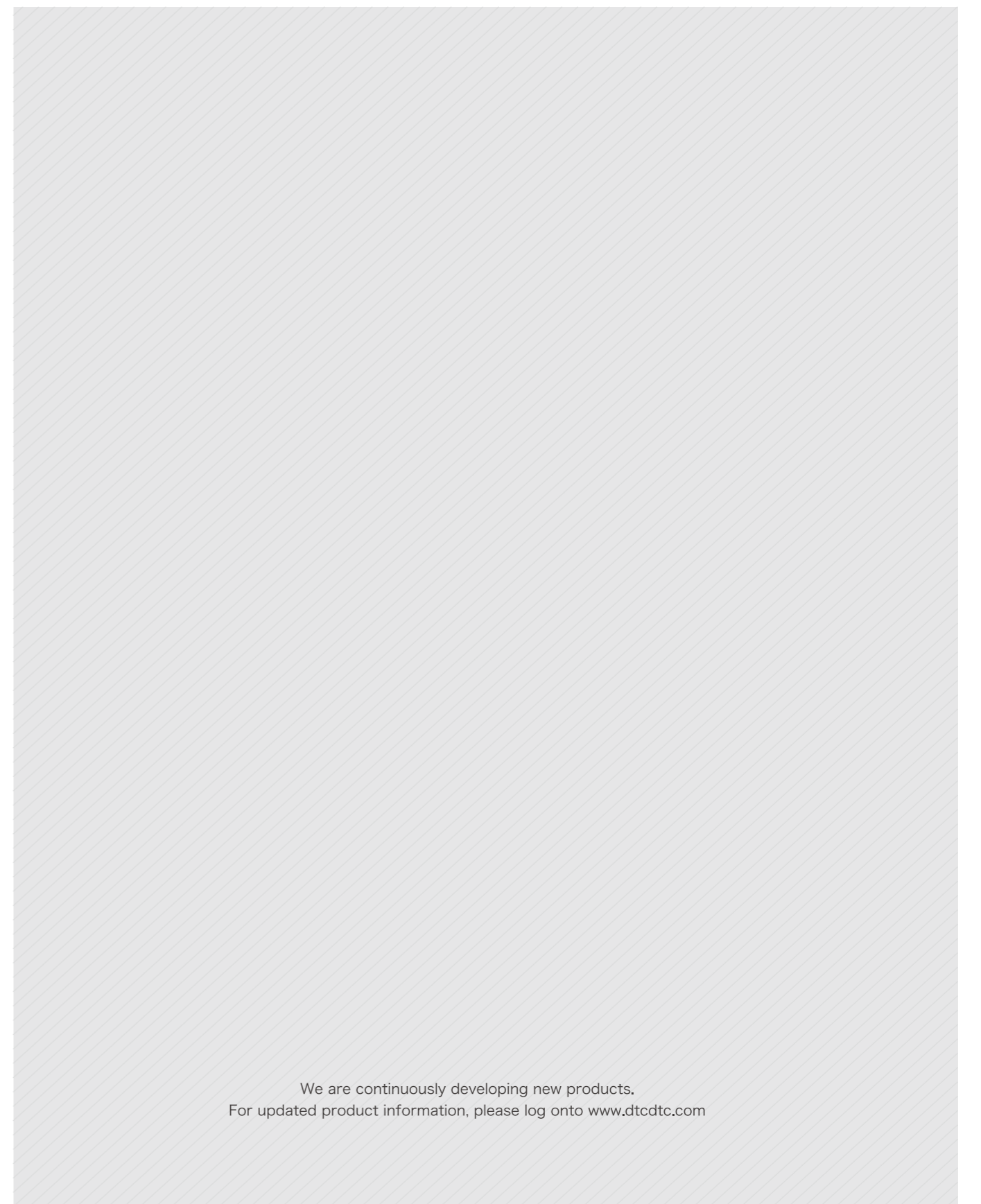
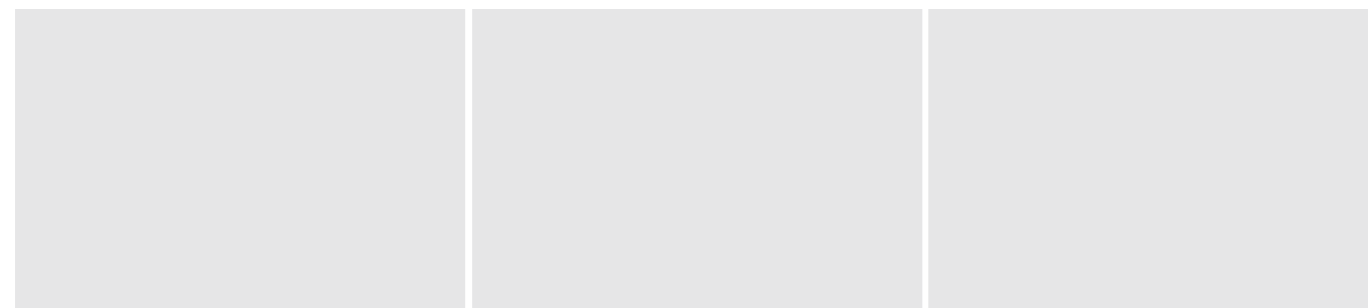
Adjustment



Removal



The arm of this device could spring up and cause injury!



We are continuously developing new products.
For updated product information, please log onto www.dtcctc.com